

CANTERBURY AT QUANTUM VILLAGE

A REPLAT OF
 LOT 88, AND A PORTION OF LOTS 83, 84, 86, 87 AND 89B, 'QUANTUM PARK AT BOYNTON BEACH, P.I.D. PLAT NO. 8', ACCORDING TO THE PLAT
 THEREOF AS RECORDED IN PLAT BOOK 57, PAGES 196 AND 197, PUBLIC RECORDS OF PALM BEACH COUNTY
 LYING IN SECTIONS 16 & 17, TOWNSHIP 45 SOUTH, RANGE 43 EAST, CITY OF BOYNTON BEACH, PALM BEACH COUNTY, STATE OF FLORIDA

FEBRUARY 2003 SHEET 2 OF 4

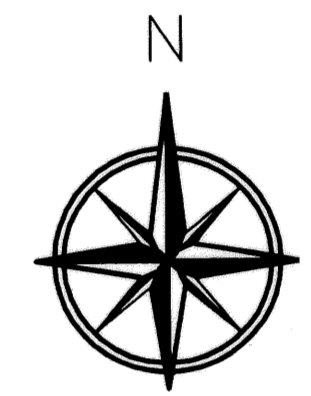
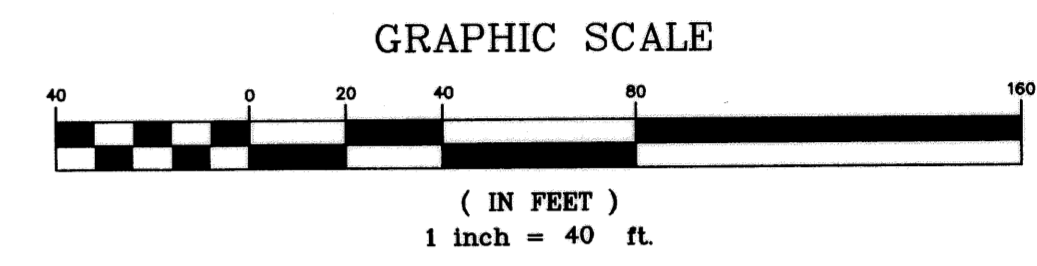
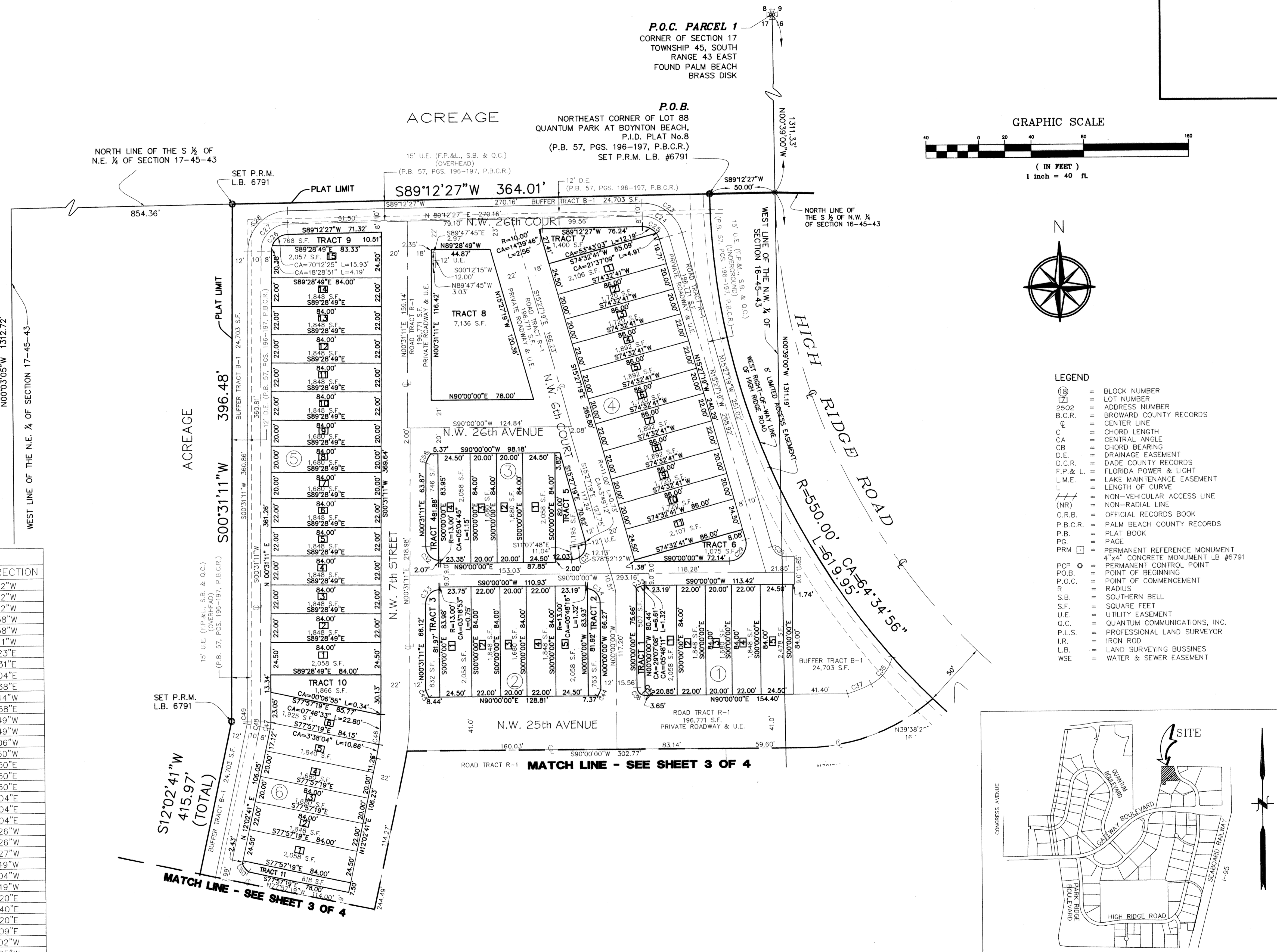
This instrument prepared by:
 Robert W. Jackson Jr., PSM
 Florida Registration Number LS 4158
Calvin, Giordano & Associates, Inc.
Engineers Surveyors Planners
 1900 Eller Drive - Suite 600
 Ft. Lauderdale, Florida 33316
 954.921.7781 954.921.8807 fax
 Certificate of Authorization No. 6791
 February, 2003

TRACT	SQUARE FEET	ACRES
TRACT 1	507	0.012
TRACT 2	763	0.018
TRACT 3	832	0.019
TRACT 4	746	0.017
TRACT 5	1,195	0.027
TRACT 6	1,075	0.025
TRACT 7	1,401	0.032
TRACT 8	7,136	0.164
TRACT 9	768	0.018
TRACT 10	1,840	0.042
TRACT 11	618	0.014
TRACT 12	618	0.014
TRACT 13	1,000	0.023
TRACT 14	562	0.013
TRACT 15	1,680	0.039
TRACT 16	1,708	0.039
TRACT 17	1,977	0.045
TRACT 18	887	0.020
TRACT 19	7,141	0.164
TRACT 20	776	0.018
TRACT 21	280	0.006
TRACT 22	308	0.007
TRACT 23	727	0.017
TRACT 24	1,138	0.026
TRACT 25	752	0.017
TRACT 26	638	0.015
TRACT 27*	7,540	0.173
TRACT 28	835	0.021
TRACT 29	620	0.014
TRACT 30	1,026	0.024
TRACT 31	1,557	0.036
TRACT 32	4,980	0.114
TRACT 33	1,918	0.044
TRACT 34	565	0.013
TRACT 35	619	0.014
TRACT R-1	196,771	4.517
TRACT R-2	61,882	1.416
TRACT B-1	24,703	0.567
TRACT B-2	25,905	0.595
TRACT B-3	33,378	0.766
RESIDENTIAL	228,152	6.615
TOTAL	679,884	15.608

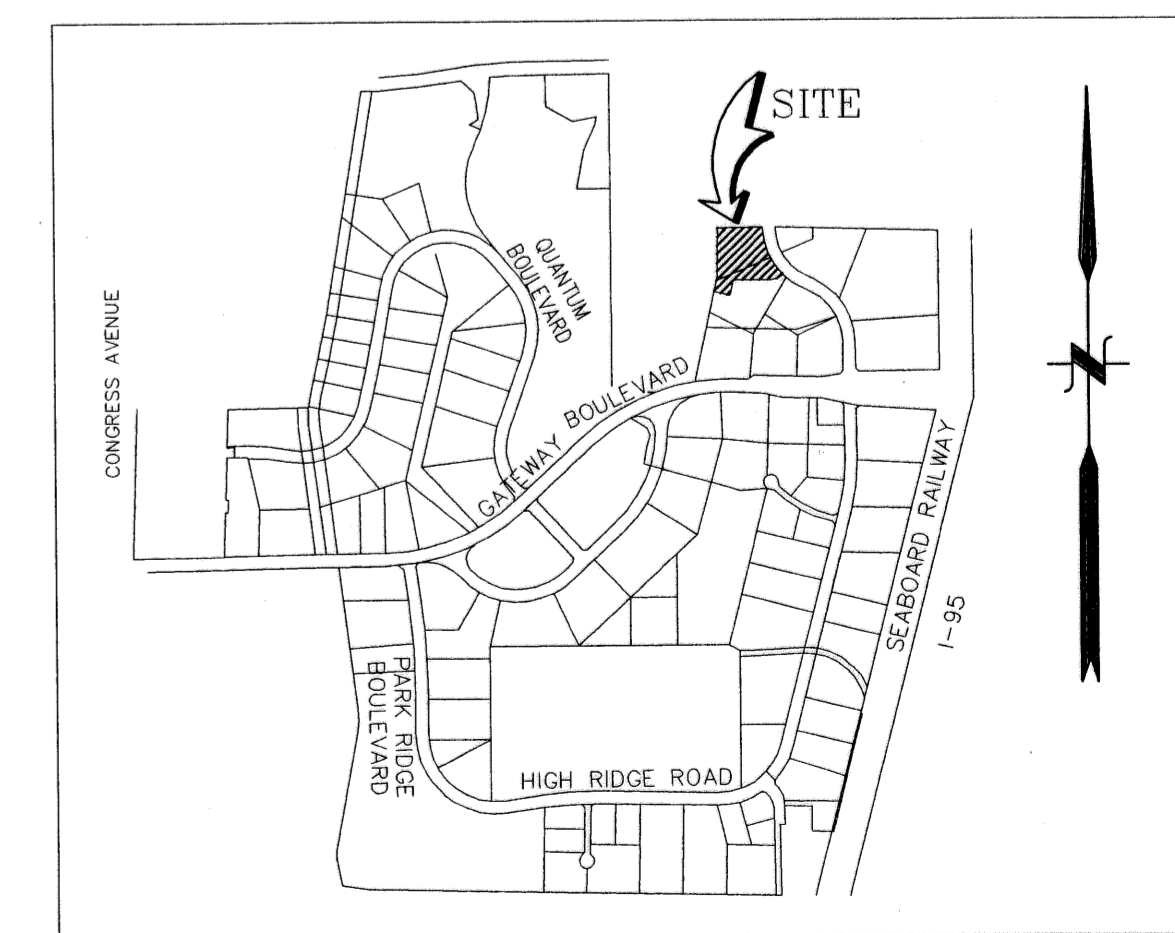
*TRACT 27 IS INCLUDED IN TRACT B-2

CURVE TABLE

CURVE	LENGTH	RADIUS	CENTRAL ANGLE	CHORD	CHORD DIRECTION
C1	36.60'	19.00'	110°22'20"	31.20'	N33°13'12"W
C2	55.86'	29.00'	110°22'20"	47.62'	N33°13'12"W
C3	21.19'	11.00'	110°22'20"	18.06'	N33°13'12"W
C4	20.42'	13.00'	90°00'00"	18.38'	S46°35'38"W
C5	32.99'	21.00'	90°00'00"	29.70'	S46°35'38"W
C6	46.71'	31.12'	85°59'35"	42.45'	S48°30'11"W
C7	20.42'	13.00'	90°00'02"	18.38'	S43°24'23"E
C8	19.30'	30.00'	36°52'10"	18.97'	N73°09'31"E
C9	53.87'	33.00'	93°32'12"	48.09'	N68°44'04"E
C10	17.28'	11.00'	90°00'00"	15.56'	N46°35'38"E
C11	46.92'	63.50'	42°20'14"	45.86'	S65°56'44"W
C12	22.79'	36.50'	35°46'43"	22.42'	N62°39'58"E
C13	21.90'	36.00'	34°51'38"	21.57'	S74°09'49"W
C14	34.29'	35.00'	56°07'38"	32.93'	S29°25'49"W
C15	15.02'	36.00'	23°54'32"	14.91'	N76°27'06"W
C16	17.28'	11.00'	90°00'00"	15.56'	N19°29'50"W
C17	20.42'	13.00'	90°00'00"	18.38'	S19°29'50"W
C18	32.99'	21.00'	90°00'00"	29.70'	S19°29'50"E
C19	48.69'	31.00'	90°00'00"	43.84'	S19°29'50"E
C20	34.28'	21.00'	93°32'12"	30.60'	N68°44'04"E
C21	21.21'	13.02'	93°20'34"	18.94'	N68°44'04"E
C22	50.61'	31.00'	93°31'25"	45.17'	N68°44'04"E
C23	40.76'	31.00'	75°20'14"	37.89'	N53°07'26"W
C24	27.61'	21.00'	75°20'14"	25.67'	N53°07'26"W
C25	17.09'	13.00'	75°20'11"	15.89'	N53°07'27"W
C26	20.12'	13.00'	88°41'16"	18.17'	S44°51'49"W
C27	32.54'	21.02'	88°41'16"	29.39'	S44°51'49"W
C28	48.01'	30.95'	88°52'38"	43.34'	S44°51'49"W
C29	23.93'	13.00'	105°27'19"	20.69'	N37°16'20"E
C30	14.31'	11.00'	74°32'41"	13.32'	S52°43'40"E
C31	20.25'	11.00'	105°27'19"	17.51'	N37°16'20"E
C32	16.23'	11.00'	84°30'41"	14.79'	S41°44'09"E
C33	16.43'	11.00'	85°33'43"	14.94'	S43°18'02"W
C34	15.96'	11.00'	83°08'08"	14.60'	N41°34'05"W
C35	7.92'	13.00'	34°55'19"	7.80'	S72°32'20"W
C36	9.42'	6.00'	90°00'00"	8.49'	S45°00'00"E
C37	19.52'	114.00'	9°48'43"	19.50'	N68°03'43"E
C38	27.05'	31.00'	49°59'53"	26.20'	N38°09'24"E
C39	13.16'	35.02'	21°31'43"	13.08'	S62°06'27"W
C40	122.32'	183.00'	38°17'47"	120.05'	N70°51'06"E



- LEGEND**
- ⊗ BLOCK NUMBER
 - Ⓛ LOT NUMBER
 - 2502 ADDRESS NUMBER
 - B.C.R. BROWARD COUNTY RECORDS
 - ⊖ CENTER LINE
 - ⊖ CHORD LENGTH
 - ⊖ CENTRAL ANGLE
 - ⊖ CHORD BEARING
 - ⊖ DRAINAGE EASEMENT
 - D.C.R. DADE COUNTY RECORDS
 - F.P. & L. FLORIDA POWER & LIGHT
 - L.M.E. LAKE MAINTENANCE EASEMENT
 - ⊖ LENGTH OF CURVE
 - ⊖ NON-VEHICULAR ACCESS LINE
 - (NR) NON-RADIAL LINE
 - O.R.B. OFFICIAL RECORDS BOOK
 - P.B.C.R. PALM BEACH COUNTY RECORDS
 - P.B. PLAT BOOK
 - PRM PERMANENT REFERENCE MONUMENT
 - ⊖ 4"x4" CONCRETE MONUMENT LB #6791
 - ⊖ PERMANENT CONTROL POINT
 - P.O.B. POINT OF BEGINNING
 - P.O.C. POINT OF COMMENCEMENT
 - R RADIUS
 - S.B. SOUTHERN BELL
 - S.F. SQUARE FEET
 - U.E. UTILITY EASEMENT
 - Q.C. QUANTUM COMMUNICATIONS, INC.
 - P.L.S. PROFESSIONAL LAND SURVEYOR
 - I.R. IRON ROD
 - L.B. LAND SURVEYING BUSINESS
 - WSE WATER & SEWER EASEMENT



LOCATION MAP
 NOT TO SCALE

P:\PROJECTS\2002\022544 QUANTUM VILLAGE AT BOYNTON BEACH\SURVEY\PLAT\CANTERBURY AT QUANTUM VILLAGE - 18.DWG - SHEET 2 OF 4 - 02-03-2003